



Using citizen science data in integrated population models to inform conservation



Orin J. Robinson^{a,*}, Viviana Ruiz-Gutierrez^a, Daniel Fink^a, Robert J. Meese^b, Marcel Holyoak^b, Evan G. Cooch^c

^a Cornell Lab of Ornithology, Cornell University, 159 Sapsucker Woods Rd Ithaca, NY 14850, USA

^b Department of Environmental Science & Policy, University of California, One Shields Ave., Davis, CA 95616, USA

^c Department of Natural Resources, Cornell University, 202 Fernow Hall, Ithaca, NY 14853, USA

ARTICLE INFO

Keywords:

eBird
Generalized additive model
Sequential data integration
Structured survey
Tricolored blackbird

ABSTRACT

Analysis of animal population status and change are core elements of ecological research and critical for prioritizing conservation actions for at-risk species. Traditionally, count-based data from structured surveys have been the main source of information used to estimate trends and changes in populations. In the past decade, advances in integrated population models (IPMs) have allowed these data to be combined with other data sources (e.g., observations of marked individuals). IPMs have allowed researchers to determine the direction and magnitude of population trends and to identify underlying mechanisms contributing to population change. For many species, life-history characteristics (e.g., colonial breeding, low site-fidelity), low abundance and/or low detection probability make it difficult to collect sufficient data; thus, IPMs for these species are difficult to employ. Citizen science data may be useful in such situations and enable conservation biologists to combine data from many sources into robust estimates of population trajectories. IPMs represent a possible way of combining diverse data sources, but their practicality for incorporating citizen science data has not been investigated. Here, we used count data from eBird to estimate population trends for a species of conservation concern, the tricolored blackbird (*Agelaius tricolor*). We combined estimates of relative abundance with banding and nesting data. Our joint estimation of demographic rates allowed us to evaluate their individual contributions to the population growth rate. Our analysis suggests that the California tricolored blackbird population suffered a mean decline of 34% from 2007 to 2016. Mean annual adult survival ranged from 0.28 to 0.93 for females and 0.17 to 0.78 for males. Mean juvenile survival across years was 0.21 (95% CI = 0.0007–0.49), fecundity (as nestlings per nest) ranged from 0.46 to 1.27. We suggest that investments in increasing reproductive success and recruitment are the most likely conservation strategies to increase the population. Here, the extensive survey efforts of citizen scientists aided the employment of IPMs to inform conservation efforts for tricolored blackbirds.

1. Introduction

The ability to provide information on the status and distribution of poorly known species has been a focus of recent developments in the fields of population ecology and conservation biology (Pacifi *et al.*, 2012; Specht *et al.*, 2017). Often, such species are rare, nomadic (Pedler *et al.*, 2018), have irruptive or unpredictable life histories (Woinarski *et al.*, 1992), or possess other characteristics that make counting or collecting demographic information difficult (Thompson, 2004). Count-based data across a species' range are typically collected through survey programs that use a structured design (e.g., repeated counts; Royle, 2004). This approach has worked well to characterize trends and

distributions of populations at local (Keever *et al.*, 2017) and continental scales (e.g. North American Breeding Bird Survey [BBS]; Sauer and Link, 2011) for species that have predictable movements or are faithful to specific sites at certain times of the year. However, most structured surveys are designed with a limited number of fixed sampling locations surveyed each year, which can lead to biased population trajectory/trend estimates for species with unpredictable intra- and/or inter-annual movements. That is, a high count in one year followed by a low count in the next may not be indicative of a decline, but rather that a significant number of individuals occurred at non-sampled sites during the second survey. Williams and Boyle (2018) showed that grasshopper sparrows (*Ammodramus savannarum*) changed sites, even

* Corresponding author.

E-mail address: ojr7@cornell.edu (O.J. Robinson).

<https://doi.org/10.1016/j.biocon.2018.10.002>

Received 26 April 2018; Received in revised form 25 September 2018; Accepted 1 October 2018

Available online 06 October 2018

0006-3207/ © 2018 Elsevier Ltd. All rights reserved.

within a breeding season, far more often than previously thought. This suggests that although an observer may be counting the same species at the same sites year after year, the likelihood of encountering the same individuals in successive years may be very low. As such, it may be difficult to infer population processes when using data collected in this manner.

Information on population vital rates is equally challenging to obtain relative to count data for nomadic or irruptive species, greatly limiting our ability to determine what factors influence population growth rates, or to define populations at all (Yoccoz et al., 2001). Mark-recapture studies are a widely used technique to estimate survival; however, species that do not return to the same breeding locations each year are unlikely to yield recapture rates that are high enough to allow for the robust estimation of survival and other vital rates (Marshall et al., 2004). Mark-recapture studies based on live encounters measure apparent survival; losses of marked birds may represent true mortality or permanent emigration from the study area, and the distinction between the two may not be teased apart. This is an even greater issue in birds with low site fidelity. For example, nomadic red crossbills (*Loxia curvirostra*) have low recapture probabilities and transient dynamics, which have been shown to underestimate survival (Alonso and Arizaga, 2013). High rates of transience, such as those shown by American yellow warblers (*Setophaga petechia*), also lead to estimates of survival rates that are biased low (Cilimburg et al., 2002).

Integrated population models (IPMs) are increasingly being used in population ecology and have great potential as a wildlife management and conservation tool (Zipkin and Saunders, 2018; Arnold et al., 2018). IPMs allow researchers to jointly analyze data collected by different types of population studies (Schaub and Abadi, 2011). Benefits of this joint analysis can include improved precision in the estimates of demographic parameters and population size, estimation of demographic parameters for which data are lacking, and simultaneous examination of the change in population size and the mechanisms underlying the estimated change (Kéry and Schaub, 2012). While these models may accommodate many types of data, population counts or indices are required. These data allow the integration to occur, as the change in population size or structure over time is driven by the vital rates estimated by the other data sets in the model (Schaub and Abadi, 2011). Population index data from national-scale surveys have been successfully used in IPMs to estimate large-scale population trends (e.g. Robinson et al., 2014; Ahrestani et al., 2017). However, these data come from rather strict sampling protocols conducted at fixed locations and applying them to nomadic or irruptive species may be inappropriate.

Tricolored blackbirds (*Agelaius tricolor*) are nearly endemic to California, with no > 1% of the population breeding in Washington, Oregon, Nevada, and the Mexican state of Baja California (Beedy et al., 2017). The species has declined rapidly, experiencing a 63% decline in its breeding abundance from 1935 to 1975 (Graves et al., 2013). This decline was concurrent with declines of freshwater wetlands and grasslands, their historical breeding habitats, although recent studies suggest that reproductive success may be as high or higher in alternative habitats such as Himalayan blackberry (*Rubus armeniacus*) and silage crops (Holyoak et al., 2014; Weintraub et al., 2016). The population has continued to decline since 1975, although the most recent California statewide survey (conducted in April 2017) suggests that the population may have increased slightly since 2014, or that breeding birds were uncounted previously and are now included in the breeding surveys (Beedy et al., 2017).

Tricolored blackbirds present monitoring challenges because of their unique life-history traits. They are a colonial breeding species, historically breeding in colonies as large as 200,000 individuals (Neff, 1937), and many individuals breed twice per year, typically in 2 different locations (Hamilton, 1998; Beedy et al., 2017). For species that nest in highly-dynamic wetland environments, the benefits of site fidelity to previous breeding colonies may be outweighed by annual

changes in habitat quality, as has been observed in colonial nesting herons and egrets (Carrasco et al., 2017). This has also been observed in tricolored blackbirds, where most colony sites are not used in consecutive years (Beedy and Hamilton, 1997; Holyoak et al., 2014; Airola et al., 2016). This variable site occupancy can make it challenging to recapture banded birds and/or to collect yearly population count data (Marshall et al., 2004). As most surveys are conducted at fixed locations, it may be difficult to interpret year-to-year counts of a species that is not likely to be in the same count location for each subsequent sampling occasion. Early efforts for counting tricolored blackbirds have summed the number of birds across all breeding sites (Meese, 2015), however this metric was shown to be highly dependent upon the number of colony sites sampled and is not recommended (Graves et al., 2013). The current method is a coordinated range-wide survey conducted triennially (e.g., Meese, 2014) and augmented by a sampling of the statewide population in years where the larger survey does not occur. However, these efforts are focused on previously occupied sites and may miss colonies that are established in new locations.

Given the uncertainties associated with tricolored blackbird count and index data (e.g., BBS), we used data from the eBird citizen-science project (Sullivan et al., 2014) as the population index data in an IPM. These data provide comprehensive spatial coverage and are independent of species occurrence as they may be collected anywhere in a species' range. As such, they may provide the best available representation of the population trajectory over the last 10 years of this unique species. We integrated eBird data for tricolored blackbirds from the pre-breeding period with band re-capture data from 18 sites and fecundity data from 10 sites in an IPM to determine the population trajectory and to identify life-history stages that are most influential to population growth. Understanding these parameters will help to identify knowledge gaps and inform management recommendations that may ensure the persistence of the species. This study provides the first use of less structured, citizen-science data in an IPM, and emphasizes the potential for these types of rapidly growing databases to become powerful tools in the fields of applied ecology and conservation biology.

2. Methods

2.1. Mark-recapture data

Tricolored blackbirds were banded at 18 sites throughout central California using United States Geological Survey (USGS) metal bands from 2007 to 2016. Trapping occurred during the breeding season (April–July) using walk-in traps, typically baited with cracked corn and infrequently supplemented with mealworms. Recaptures were recorded each year during the breeding season. Each breeding season was considered a separate recapture occasion and data for within-season recaptures were not included in our estimates of annual survival. We used data from 64,129 tricolored blackbirds (49,668 females and 14,461 males) banded and 1460 recaptured (1336 females and 124 males) as adults in our analysis. Only 368 individuals were initially marked and then recaptured at the same site.

2.2. Fecundity data

As raw fecundity data were unavailable, we simulated the fecundity data based on the reported summary statistics for nestling (defined as 5–9 day old chicks) surveys from 1992 to 2016 (Appendix 1). This was conducted in such a way as to capture the substantial year-to-year variation expected in the underlying data. Because between 60 and 100 nests (n) were surveyed in each year (i) per site (s), we allowed the number of nests sampled in a year to be a random draw from a uniform distribution with minimum 60 and maximum 100. The number of sampled sites varied among years between two and 10, thus we allowed the number of sites to be drawn from a uniform distribution with a minimum of two and maximum of 10. We then calculated the long-term

mean and standard deviation of the annual assumed nestlings per nest (h) from 1992 to 2016. We calculated the proportional difference for the years 2007–2016 relative to the long-term average of nestlings produced per nest in order to modify the estimates for these years.

$$v_i = \frac{h_i}{\frac{\sum(h_{1992}, h_{1993}, \dots, h_{2007})}{24}}$$

Thus, v is a measure of how far the number of nestlings per nest is from the long-term average, scaled to one. If h for a given year was exactly the long-term average, it was multiplied by one. If it was above or below the average, it was multiplied proportionally to the distance from the average. We calculated the number of nestlings (J) counted in year i as

$$J_i = h_i \times n_i \times s_i \times v_i$$

This was simulated 1000 times and the mean values for J and n were used as data for the IPM.

2.3. Abundance data

The tricolored blackbird abundance information came from the citizen-science project eBird (Sullivan et al., 2014). eBird is a global bird monitoring project that collects observations made throughout the year. Participants follow a checklist protocol, in which time, location, search effort and counts of birds are all reported in a standardized manner. By asking participants to indicate when they have contributed ‘complete checklists’ of all the species they detect and identify on a search, we can assume failure to report a species conveys information about detection probability and presumed absence of the species. We used the inferred counts of zero birds, together with information on observers’ effort, to account for sources of variation associated with the detection process.

There are a number of specific data fields that eBird participants fill in when they submit observations that aid in how data are filtered. First, participants collect observations via checklists that contain fields for location, time (day, month, year, time of day), distance travelled, duration, number of observers, and counts of species encountered. The checklists also pass through automated filters that flag anything that may be unusual, such as an observation of a species that is rare at a specific location and/or time of year, or an abnormally high count of a species (Sullivan et al., 2014). A network of > 500 experts around the world manage the checklists submitted by birders, working to verify any checklist flagged by the automated filters.

Data for our analysis was from a subset of complete checklists collected under the ‘travelling count’ and ‘stationary count’ protocols. These data were generated from checklists with transect distances ≤ 8.1 km, start times during daylight hours between 0500 and 2000 local time, and total search times ≤ 6 h.

We used relative abundance calculated using counts of tricolored blackbirds recorded in eBird as the count data for the IPM. We collected eBird records for tricolored blackbirds across all of California for the years 2007–2016 and during the early breeding period (March 23–April 25). We only kept checklists that recorded an abundance or absence for tricolored blackbirds. We removed checklists simply noting occurrence without an estimated abundance. After implementing these constraints, 113,501 checklists remained (Fig. 1). We separately filtered the data by year according to Robinson et al. (2018) in order to balance the data set temporally and spatially, and to correct for class imbalance. As recent years contain far more checklists than older ones, we restricted the number of samples per year to control for the increase in eBird participation. We set 2007 as our reference year, fixing the sample size of the spatially balanced data for each year to equal that of 2007. As this removed some checklists from the data for the years after 2007, we resampled across all of the checklists 1000 times, creating 1000 unique eBird data sets, filtered from the original 113,501 checklists that remained.

Following Fink et al. (2018), we used each of these 1000 data sets in

a two-step zero-inflated generalized additive model (ZI-GAM; Appendix 2) to estimate the relative abundance of tricolored blackbirds for each year of the study. Parameters were low-order piecewise polynomial basis functions with limited knots to restrict the flexibility of the spline components (denoted by s), thereby controlling the bias-variance tradeoff and improving the stability of the ZI-GAM. The first step is a binary response (ψ) of detection (1) or non-detection (0) and had the form

$$\begin{aligned} \psi = & s(\text{Year}) + s(\text{Day}) + s(\text{EffortHrs}) + s(\text{EffortDist}) + s(\text{Time}) \\ & + s(\text{Lat, Long}) + s(\text{Cropland}) + s(\text{Savannah}) + s(\text{Grassland}) \\ & + s(\text{OpenShrub}) + s(\text{Shallow Inland Water}) + s(\text{Elevation}) \end{aligned}$$

The second step of the ZI-GAM is a Poisson response of the estimated abundance of tricolored blackbirds on an eBird checklist, given that a tricolored blackbird was detected in the first step, and took the form

$$\begin{aligned} N = & s(\text{Year}) + s(\text{Day}) + s(\text{Cropland}) + s(\text{Savannah}) + s(\text{Grassland}) \\ & + s(\text{OpenShrub}) + s(\text{Shallow Inland Water}) + s(\text{Elevation}) \\ & + s(\text{Evergreen needleleaf}) + s(\text{Mix Forest}) + s(\text{Urban}) + s(\text{Eastness}) \\ & + s(\text{Northness}) \end{aligned}$$

Covariates for time spent searching (EffortHrs), distance travelled while searching (EffortDist), and time of day (Time) in the detection portion; and year (Year), and day of the year (Day) in both portions were included to account for variation in detectability and variation in availability for detection. Coarse-scale spatial variation was captured by a smoothed two-dimensional function of latitude and longitude (Lat, Long) and fine-scale spatial variation was captured by the MODIS land cover classes. To account for variation in the spatiotemporal balancing step described above, we fit the ZI-GAM to each of the 1000 replicate data sets and used the mean result in the analysis. These models were fit using the mgcv (Wood, 2011) package in R (R Core Team, 2016). We determined the population trend from eBird data alone as a generalized linear model of relative abundance vs. year.

2.4. Integrated population model

We analyzed the demographic data described above using a sequential method of the ZI-GAM followed by an integrated population model (Besbeas et al., 2002; Schaub and Abadi, 2011). We based our IPM on a pre-breeding, 2×2 stage-based projection model and three separate sub-models to link adult survival for both males (ϕ_{am}) and females (ϕ_{af}), juvenile survival (ϕ_j), fecundity (F) and relative abundance (N_{tot}). We modeled relative abundance (N) for both age classes (non-adults [1] and adults [2+]) at each year (t) so that

$$N_{1,t} \sim \text{Norm}(F_{t-1} \times \phi_{j,t-1} \times N_{tot,t-1}, \tau_y)$$

$$N_{2+,t} = (N_{tot,t-1} \times ((0.33333 \times \phi_{am,t-1}) + (0.66667 \times \phi_{af,t-1})), \tau_y)$$

$$N_{tot,t} = N_{1,t} + N_{2+,t}$$

where τ is the estimated error in the count data given an uninformative uniform prior (min = 0 and max = 10,000), F is estimated from the fecundity data.

$$J_t \sim \text{Poisson}(n_t F_t)$$

and ϕ is estimated for adults of each sex independently using the multinomial likelihood of the CJS model (Appendix 3; Kéry and Schaub, 2012). As tricolored blackbird breeding colonies have a sex ratio skewed towards females, we were concerned that if true differences in survival exist, assuming equal survival probabilities between the sexes may bias the results (Gerber and White, 2014). Male adult survival was modified by 1/3 and female adult survival by 2/3 as there is roughly one male for every two females in a colony, however there may be

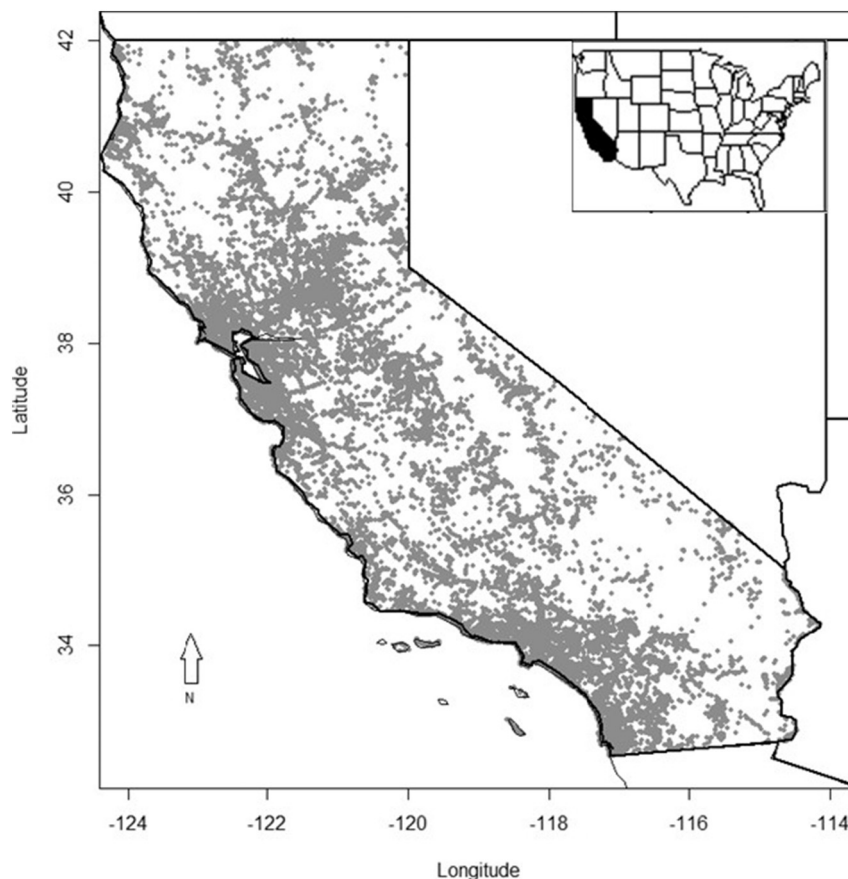


Fig. 1. Spatial coverage of eBird checklists after weekly spatial filtering for the early breeding season (March 23–April 25) for the study years 2007–2016. Each grey point represents a checklist.

between one and four females per male (Beedy et al., 2017). As we only used banding data for adults, ϕ_j was entered as a latent parameter of the model and we assumed that juvenile survival did not differ between males and females. We did not include immigration as our abundance data from eBird spanned the entire state of California, which includes roughly 99% of the breeding population (Beedy et al., 2017). We estimated the growth rate (r) of the population during the 10 years of the study from the posterior estimates of relative abundance. We then compared the estimates of ϕ_{af} , ϕ_{ams} , and F with r to determine the effect of each vital rate on population growth via correlation analysis (e.g. Kéry and Schaub, 2012; Ahrestani et al., 2017; Saunders et al., 2018). Posterior distributions of the demographic parameters and relative abundances were estimated from 50,000 iterations after a burn-in of 5000 samples. Convergence was considered successful if R hat values were < 1.1 for all parameters (Gelman and Rubin, 1992). The IPM (Appendix 4) was fit using the package r2jags (Su and Yajima, 2015) in R (R Core Team, 2016).

3. Results

All credible intervals (CI) reported are the 95% highest posterior density intervals. The relative abundance in the analysis of eBird data alone estimated a decline of 52%, with the highest relative abundance within the timeframe of the study occurring in 2007 and the lowest occurring in 2013 (Fig. 2). The IPM analysis estimated a mean decline of 34% (CI = 7.5% growth to 71% decline), with the highest relative abundance occurring in 2008 and the lowest in 2014 (Fig. 2). The growth rate of the population was negative (mean -0.06 , CI -0.14 – 0.016) although the CI interval slightly overlapped zero. This is highly suggestive of a decline, as 94% of the IPM iterations resulted in

an estimated growth rate below zero (Fig. 3). Females had a higher overall mean apparent annual survival than males (Table 1). Although the credible intervals for most year-interval estimates overlapped between males and females, three of the credible intervals for female adult survival did not include the mean value for male adult survival (Fig. 4). Yearly estimates for juvenile survival were uninformative, having credible intervals for some years that spanned the entirety of the allowable parameter space (i.e. 0–1). Therefore, we calculated a long-term mean juvenile survival across years (mean 0.21, CI 0.0007–0.49). Our inability to estimate yearly juvenile survival and the relatively wide CI for the long-term mean are likely due to a lack of explicit data (Abadi et al., 2010). Estimated parameters for which no explicit data are available tend to absorb bias in the other parameter estimates (e.g. parameter ρ in Robinson et al., 2014), which also likely added to the lack of precision in our estimates of juvenile survival. Mean yearly fecundity spanned values from 0.46 nestlings per nest in the least productive year to 1.27 in the highest year (Table 1). These fecundity values are calculated from observations of five to nine day old chicks. As such, these estimates are likely much lower than similar analyses where eggs per nest are calculated.

The years of highest relative abundance followed the intervals where fecundity and female survival were also at their highest. Adult female survival and fecundity were positively correlated with population growth rate ($\rho = 0.24$, CI -0.50 – 0.77 and $\rho = 0.33$, CI -0.45 – 0.76 respectively) and the mean posterior probability of a positive correlation coefficient was 0.70 and 0.69. Adult male survival was slightly and negatively correlated with growth rate ($\rho = -0.06$, CI -0.61 , 0.67), and its probability of being positively correlated with the growth rate was 0.55.

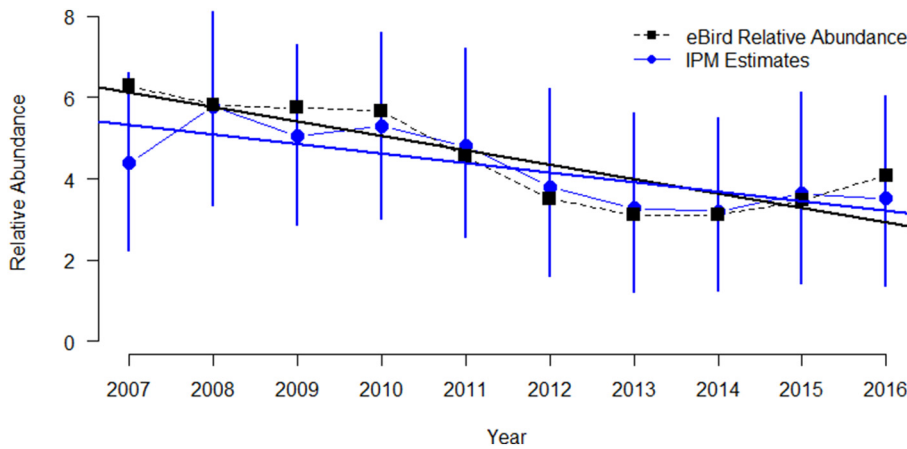


Fig. 2. Estimates of relative abundance from eBird (black) and the integrated population model (blue) with 95% highest posterior density intervals. The straight lines are predicted values from a generalized linear model on each time series. (For interpretation of the references to color in this figure legend, the reader is referred to the web version of this article.)

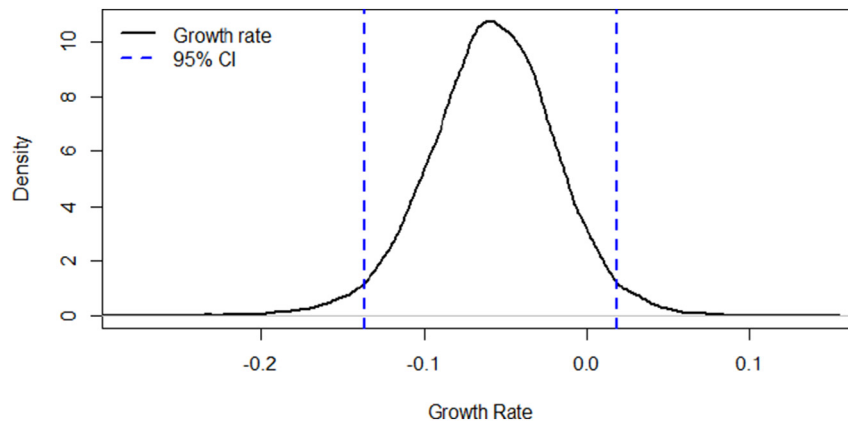


Fig. 3. Posterior distribution of the growth rate estimated by the integrated population model. Vertical dashed blue lines represent the 95% highest posterior density intervals. (For interpretation of the references to color in this figure legend, the reader is referred to the web version of this article.)

Table 1

Estimates of annual adult female survival (ϕ_{af}), adult male survival (ϕ_{am}), and fecundity (f) for each time interval during the study with the highest posterior density interval in parentheses. Interval 1 is the period between banding field seasons of 2007–2008, interval 2 is between 2008 and 2009, etc.

	1	2	3	4	5	6	7	8	9
ϕ_{af}	0.93 (0.81, 0.99)	0.53 (0.42, 0.64)	0.77 (0.64, 0.90)	0.80 (0.64, 0.98)	0.66 (0.45, 0.88)	0.65 (0.43, 0.89)	0.78 (0.59, 0.99)	0.74 (0.55, 0.94)	0.28 (0.02, 0.87)
P_{af}	0.13 (0.008, 0.021)	0.047 (0.035, 0.06)	0.027 (0.022, 0.032)	0.013 (0.01, 0.016)	0.002 (0.001, 0.003)	0.004 (0.003, 0.006)	0.013 (0.01, 0.017)	0.012 (0.009, 0.016)	0.255 (0.022, 0.891)
ϕ_{am}	0.76 (0.45, 0.99)	0.52 (0.22, 0.87)	0.78 (0.51, 0.99)	0.73 (0.43, 0.99)	0.64 (0.31, 0.99)	0.38 (0.08, 0.78)	0.17 (0.03, 0.39)	0.61 (0.24, 0.99)	0.21 (0.003, 0.78)
P_{af}	0.016 (0.005, 0.037)	0.022 (0.008, 0.048)	0.015 (0.009, 0.024)	0.001 (0.001, 0.003)	0.002 (0.001, 0.004)	0.011 (0.003, 0.026)	0.036 (0.009, 0.099)	0.014 (0.004, 0.039)	0.206 (0.007, 0.882)
f	1.25 (0.92, 1.59)	0.54 (0.32, 0.75)	1.27 (0.95, 1.62)	0.99 (0.70, 1.28)	0.46 (0.27, 0.67)	0.88 (0.61, 1.17)	0.91 (0.62, 1.18)	0.84 (0.58, 1.12)	0.86 (0.60, 1.14)

4. Discussion

As numerous factors continue to threaten wildlife populations, it is imperative to understand the drivers of population dynamics. IPMs provide a framework by which population growth and the processes driving it can be simultaneously explored (Kéry and Schaub, 2012; Duarte et al., 2017). One requirement in IPMs is a reliance upon abundance data of the species of concern, which may be difficult to acquire for species with complex life histories. We have demonstrated an approach to sequentially model abundance data from eBird, and incorporate this into an IPM to analyze population trend, band recapture, and fecundity data for a species of conservation concern. We were able to explore the population trend of tricolored blackbirds and its response to fecundity and adult survival and to estimate juvenile

survival, a parameter for which we have no data. This analysis would not have been possible without making use of eBird data, as the more statistically robust surveys have only occurred for the last three triennial Statewide Surveys (Meese, 2015).

Our estimates of relative abundance from the IPM closely follow the relative abundance estimates from eBird data, although the models disagree on the year of highest relative abundance. In this analysis, eBird data cannot give a measure of absolute abundance, so our results can only be interpreted as an estimate of a population trend, and not population size at each year. Our analysis indicates that the population of tricolored blackbirds has likely declined between 2007 and 2016, as 94% of the IPM iterations resulted in a growth rate below zero. We also estimated that the magnitude of that decline is 34%. Visual inspection of our estimated population trajectory (Fig. 2) appears to show that the

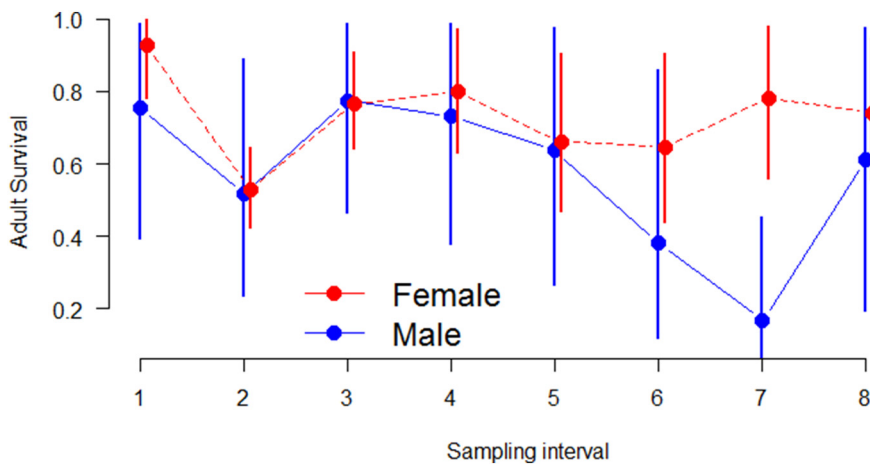


Fig. 4. Adult survival estimates and 95% highest posterior density intervals for female (red) and male (blue) tricolored blackbirds for each sampling interval (i.e., the probability an adult survived during the time-period between each sampling occasion). Interval 1 is the period between banding field seasons of 2007–2008, interval 2 is between 2008 and 2009, etc. The last sampling interval (9) has been removed because survival and recapture probabilities are confounded for the last interval and cannot be estimated separately. (For interpretation of the references to color in this figure legend, the reader is referred to the web version of this article.)

population may have somewhat stabilized in the last few years of the study, a result in accord with the results of the most recent Statewide Survey of the species (Meese, 2017). There are several possible interpretations of this result. First, although the population may have appeared to cease to decline from 2013 onwards, it may have been because more birds attempted to breed from 2013 onwards than immediately prior to this; that is, proportionately more birds were present as nonbreeding individuals prior to 2013 and attempted to breed from 2013 onwards. Second, recruitment may have increased in more recent years, perhaps because a large number of breeding birds were being protected in grain fields due to dairy farmers being compensated to delay crop harvest to allow birds to fledge (Arthur, 2015; Meese, 2017), or because adult or juvenile survival increased in more recent years. Neither the reproductive success nor survival ideas are supported by the results of our IPM analyses for these specific years, although the overall result suggests that fecundity and adult female survival have large effects on the population growth rate. Our eBird data may be missing some counts from colonies located on properties with limited access. Hence, it is possible that they do not capture results for a portion of the population, such as colonies breeding in private grain fields or National Wildlife Refuges that are closed to the public. Although the population may appear to have stabilized, it is considerably smaller than it was in 2007. We caution that a small but briefly stable population does not necessarily mean a healthy one (Lacy, 2000; Robles and Ciudad, 2012).

It is common for population models to model only females (Caswell, 2001), or to assume both males and females have equal survival probabilities (e.g. Robinson et al., 2016; Saunders et al., 2018; but see Tenan et al., 2016). As we were concerned that the skewed sex ratio in tricolored blackbird colonies may bias our results, we estimated female and male adult survival separately within the IPM. We also varied the proportion of males and females in the model (results not shown) and determined that the ratio assumed did not make a difference to the population trend for tricolored blackbirds or the survival estimates until the ratios were extremely skewed ($\leq 10\%$ of either sex). We found that mean adult female survival is generally higher than male survival, and our results also suggest higher average annual adult survival estimates than previously unpublished analyses (0.6; Beedy et al., 2017).

The results of our correlation analysis showing a positive or negligible association of each vital rate to population growth are not surprising, given that survival and fecundity are components of the population growth rate (e.g. part-whole correlation; Sokal and Rohlf, 1995). The result of interest is that male adult survival was not correlated at all with growth rate while female adult survival and fecundity were similarly correlated with population growth. This is likely due to the breeding system of tricolored blackbirds. They are colonial nesters and the sex ratio in colonies is usually one male per two females,

although a male may mate with more than two females (Beedy et al., 2017). Given this, the loss of an adult male tricolored blackbird does not appear to be as detrimental to the population as the loss of an adult female. Our results also suggest that conservation action which targets female survival and/or fecundity may achieve the greatest benefit to the population as they had similar contributions to population growth rate. However, adult female survival is higher than previous estimates have suggested (Beedy et al., 2017) and similar to adult survival estimates of red-winged blackbirds (*Agelaius phoeniceus*; Fankhauser, 1967) and yellow-headed blackbirds (*Xanthocephalus xanthocephalus*; Bray et al., 1979). As this vital rate is already comparatively high, there may not be room to improve it via conservation measures. Therefore, we suggest that conservation practitioners consider actions that improve fecundity, as the majority of years for which we estimated fecundity were below one chick per nest.

Cook and Toft (2005) showed that tricolored blackbirds breeding in unharvested grain fields had higher reproductive success than did those breeding in freshwater marsh- the traditional habitat for breeding colonies. To this end, conservation action to protect nest sites and improve fecundity are already underway in California, where farmers are being compensated to offset lost crop value from delaying harvest of the grain crop in which tricolored blackbirds are nesting (Arthur, 2015). Birds nesting in Himalayan blackberry and milk thistle (*Silybum marianum*) have high reproductive success compared to freshwater marshes; however these plants are not native and may interfere with the systems in which they are found (Cook and Toft, 2005; Holyoak et al., 2014; Weintraub et al., 2016). Holyoak et al. (2014) suggest that native nettles may provide the best option for restoring or creating nesting sites as colonies in these sites had higher nest success than other native nesting substrates. Controlling tricolored blackbirds' interactions with other species may also provide an avenue for management. Cattle egrets (*Bubulcus ibis*), black-crowned night-herons (*Nycticorax nycticorax*), raccoons (*Procyon lotor*), coyotes (*Canis latrans*), and several other species are known to prey on tricolored blackbird nestlings and have caused entire colonies to fail (Meese, 2012; Holyoak et al., 2014; Beedy et al., 2017). Consumptive (Meese, 2016) and non-consumptive interactions with white-faced ibises (*Plegadis chihi*) are also known to cause nests to fail as white-faced ibises will consume tricolored blackbird eggs and destroy the nests of tricolored blackbirds in order to make their own (Weintraub et al., 2016). Conservation efforts to deter these species may prove useful in protecting tricolored blackbird nests and young. As conservation is dynamic, more research will be required to assess the effectiveness of these efforts, and to adjust conservation measures as needed (Reynolds et al., 2017).

The use of IPMs for wildlife management and conservation is growing (Arnold et al., 2018; Zipkin and Saunders, 2018), as is the number of participants in citizen science data collection efforts

(Theobald et al., 2015). Citizen science data have been used to enrich existing data sets on species occurrence and abundance (e.g. Pacifici et al., 2017) and the growth of citizen science programs may facilitate their integration with other data types as well. For species like tricolored blackbirds that may be challenging to monitor through more traditional schemes, data in eBird can be used to estimate large-scale population trends and life-history parameters. Observations collected in eBird helped to alleviate the issues associated with counting species with low site fidelity as it is an open platform and, thus, data may be collected at any site within the species' range. Because surveys may be conducted at any accessible location, eBird participants can cover much larger spatial and temporal extents and be more flexible surveying areas compared to traditional surveys. These data may be used to estimate trends over large spatial scales or to integrate with other demographic data in order to study the demographic processes driving those trends. Data integration and rapidly growing citizen science databases are poised to become powerful tools in conservation science (Zipkin and Saunders, 2018). Here, we have taken a first step to combine citizen science data with recapture and fecundity data in an IPM to help inform more effective conservation actions for tricolored blackbirds. Our research and recommendations for conservation strategies were a direct result of the joint analysis that would not have been possible without making use of citizen science data.

Supplementary data to this article can be found online at <https://doi.org/10.1016/j.biocon.2018.10.002>.

Acknowledgments

We thank S. Arthur, E. Graves, C. Wyckoff, K. Weintraub and R. Faucett for their helpful feedback, knowledge and support for this work. We thank Todd Arnold and an anonymous reviewer for their constructive comments on previous drafts of the manuscript. We also thank the eBird participants for their contributions.

References

- Abadi, F., Gimenez, O., Arlettaz, R., Schaub, M., 2010. An Assessment of Integrated Population Models: Bias, Accuracy, and Violation of the Assumption of Independence. *Ecology* 91, 1033–1044.
- Ahrestani, F.S., Saracco, J.F., Sauer, J.R., Pardiek, K.L., Royle, J.A., 2017. An integrated population model for bird monitoring in North America. *Ecol. Appl.* 27, 916–924.
- Airola, D.A., Ross, D., Swarth, C., Meese, R.J., Lasprugato, D., Marshall, M.L., 2016. Breeding Status of the Tricolored Blackbird in the Grassland-dominated Region of the Sierra Nevada, California in 2016. 19. Central Valley Bird Club Bulletin, pp. 82–109.
- Alonso, D., Arizaga, J., 2013. The impact of vagrants on apparent survival estimation in a population of Common Crossbills (*Loxia curvirostra*). *J. Ornithol.* 154, 209–217.
- Arnold, T.W., Clark, R.G., Koons, D.N., Schaub, M., 2018. Integrated population models facilitate ecological understanding and improved management decisions. *J. Wildl. Manag.* 82, 266–274.
- Arthur, S., 2015. Protecting, Restoring, and Enhancing Tricolored Blackbird Habitat on Agricultural Lands Through the Regional Conservation Partnership Program. 17. Central Valley Bird Club Bulletin, pp. 122–125.
- Beedy, E.C., Hamilton 3rd, W.J., 1997. Tricolored Blackbird status update and management guidelines. In: Sacramento, CA: September. (Jones & Stokes Associates, Inc. 97-099.) Sacramento, CA. Prepared for U.S. Fish and Wildlife Serv., Portland, OR, and Calif. Dept. of Fish and Game.
- Beedy, E.C., Hamilton 3rd, W.J., Meese, R.J., Airola, D.A., Pyle, P., 2017. Tricolored Blackbird (*Agelaius tricolor*), version 3.0. In: Rodewald, P.G. (Ed.), *The Birds of North America*. Cornell Lab of Ornithology, Ithaca, New York, USA. <https://doi.org/10.2173/bna.tribla.03>.
- Besbeas, P., Freeman, S.N., Morgan, B.J.T., Catchpole, E.A., 2002. Integrating mark-recapture-recovery and census data to estimate animal abundance and demographic parameters. *Biometrics* 58, 540–547.
- Bray, O.E., Gammell, A.M., Anderson, D.R., 1979. Survival of yellow-headed blackbirds banded in North Dakota. *Bird Band.* 50, 252–255.
- Carrasco, L., Yukihiko, T., Mashiko, M., 2017. Balance between site fidelity and habitat preferences in colony site selection by herons and egrets. *J. Avian Biol.* 48, 965–975.
- Caswell, H., 2001. *Matrix Population Models. Construction, Analysis, and Interpretation*. Sinauer, Sunderland, pp. 564.
- Cilimburg, A.B., Lindberg, M.S., Tewksbury, J.J., Hejl, S.J., 2002. Effects of dispersal on survival probability of adult yellow warblers (*Dendroica petechia*). *Auk* 119, 778–789.
- Cook, L.F., Toft, C.A., 2005. Dynamics of extinction: population decline in the colonially nesting tricolored blackbird *Agelaius tricolor*. *Bird. Conserv. Int.* 15, 73–88.
- Duarte, A., Pearl, C.A., Adams, M.J., Peterson, J.T., 2017. A new parameterization for integrated population models to document amphibian reintroductions. *Ecol. Appl.* 27, 1761–1775.
- Fankhauser, D.P., 1967. Survival rates in Red-winged Blackbirds. *Bird Band.* 38, 139–142.
- Fink, D., Auer, T., Ruiz-Gutierrez, V., Hochachka, W.M., Johnston, A., La Sorte, F.A., Kelling, S., 2018. Modeling Avian Full Annual Cycle Distribution and Population Trends with Citizen Science Data. *bioRxiv* (251868). <https://doi.org/10.1101/251868>.
- Gelman, A., Rubin, D.B., 1992. Inference from iterative simulation using multiple sequences. *Stat. Sci.* 7, 457–511.
- Gerber, L.R., White, E.R., 2014. Two-sex matrix models in assessing population viability: when do dynamics matter? *J. Appl. Ecol.* 51, 270–278.
- Graves, E.E., Holyoak, M., Kelsey, T.R., Meese, R.J., 2013. Understanding the contribution of habitats and regional variation to long-term population trends in tricolored blackbirds. *Ecol. Evol.* 3, 2845–2858.
- Hamilton 3rd, W.J., 1998. Tricolored blackbird itinerant breeding in California. *Condor* 100, 218–226.
- Holyoak, M., Meese, R.J., Graves, E.E., 2014. Combining site occupancy, breeding population sizes and reproductive success to calculate time-averaged reproductive output of different habitat types: an application to tricolored blackbirds. *PLoS ONE*, e96980. <https://doi.org/10.1371/journal.pone.0096980>.
- Keever, A.C., McGowan, C.P., Ditchkoff, S.S., Acker, P.K., Grand, J.B., Newbolt, C.H., 2017. Efficacy of N-mixture models for surveying and monitoring white-tailed deer populations. *Mammal. Res.* 62, 413–422.
- Kéry, M., Schaub, M., 2012. *Bayesian Population Analysis Using WinBUGS: a Hierarchical Perspective*. Academic Press, Oxford, UK, pp. 535.
- Lacy, R., 2000. Considering threats to the viability of small populations using individual based models. *Ecol. Bull.* 48, 39–51.
- Marshall, M.R., Diefenbach, D.R., Wood, L.A., Cooper, R.J., 2004. Annual survival estimation of migratory songbirds confounded by incomplete breeding site-fidelity: study designs that may help. *Anim. Biodivers. Conserv.* 27, 59–72.
- Meese, R.J., 2012. Cattle egret predation causing reproductive failures of nesting tricolored blackbirds. *Calif. Fish Game* 98, 47–50.
- Meese, R.J., 2014. Results of the 2014 Tricolored Blackbird statewide survey. In: *Tricolored Blackbird Portal*. 2014 Information Center for the Environment, UC Davis. <http://tricolor.ice.ucdavis.edu/reports>.
- Meese, R.J., 2015. Efforts to Assess the Status of the Tricolored Blackbird from 1931 to 2014. 17. Central Valley Bird Club Bull., pp. 37–50.
- Meese, R.J., 2016. Detection, Monitoring, and Fates of Tricolored Blackbird colonies in California in 2016. *Calif. Dep. of Fish and Wildlife, Wildlife Branch, Nongame Wildlife Program Report 2016-05*, Sacramento, CA (14 pp. + appendix).
- Meese, R.J., 2017. Results of the 2017 Tricolored Blackbird Statewide Survey. *Calif. Dept. of Fish and Wildlife, Wildlife Branch, Nongame Wildlife Program Report 2017-04*, Sacramento, CA (27 pp. + appendices). <https://nrm.dfg.ca.gov/FileHandler.aspx?DocumentID=151160>.
- Neff, J.A., 1937. Nesting distribution of the Tri-colored Red-wing. *Condor* 39, 61–81.
- Pacifici, K., Dorazio, R.M., Conroy, M.J., 2012. A two-phase sampling design for increasing detections of rare species in occupancy surveys. *Methods Ecol. Evol.* 3, 721–730.
- Pacifici, K., Reich, B.J., Miller, D.A.W., Gardner, B., Stauffer, G., Singh, S., McKerrow, A., Collazo, J.A., 2017. Integrating multiple data sources in species distribution modeling: a framework for data fusion. *Ecology* 98, 840–850.
- Pedler, R.D., Ribot, R.F.H., Bennett, T.D., 2018. Long-distance flights and high-risk breeding by nomadic waterbirds on desert salt lakes. *Conserv. Biol.* 32, 216–228.
- R Core Team, 2016. *R: A Language and Environment for Statistical Computing*. R Foundation for Statistical Computing, Vienna, Austria. <https://www.R-project.org/>.
- Reynolds, M.D., et al., 2017. Dynamic conservation for migratory species. *Sci. Adv.*, e1700707. <https://doi.org/10.1126/sciadv.1700707>.
- Robinson, R.A., Morrison, C.A., Baillie, S.R., 2014. Integrating demographic data: towards a framework for monitoring wildlife populations at large spatial scales. *Methods Ecol. Evol.* 5, 1361–1372.
- Robinson, O.J., McGowan, C.P., Devers, P.K., Brook, R.W., Huang, M., McAuley, D.G., Zimmerman, G., 2016. A full annual cycle modeling framework for American black ducks. *Nat. Resour. Model.* 29, 159–174.
- Robinson, O.J., Ruiz-Gutierrez, V., Fink, D., 2018. Correcting for bias in distribution modelling for rare species using citizen science data. *Divers. Distrib.* 24, 460–472.
- Robles, H., Ciudad, C., 2012. Influence of habitat quality, population size, patch size, and connectivity on patch-occupancy dynamics of the middle spotted woodpecker. *Conserv. Biol.* 26, 284–293.
- Royle, J.A., 2004. N-mixture models for estimating population size from spatially replicated counts. *Biometrics* 60, 108–115.
- Sauer, J.R., Link, W.A., 2011. Analysis of the North American breeding bird survey using hierarchical models. *Auk* 128, 87–98.
- Saunders, S.P., Cuthbert, F.J., Zipkin, E.F., 2018. Evaluating population viability and efficacy of conservation management using integrated population models. *J. Appl. Ecol.* <https://doi.org/10.1111/1365-2664.13080>. (in press).
- Schaub, M., Abadi, F., 2011. Integrated population models: a novel analysis framework for deeper insights into population dynamics. *J. Ornithol.* 152, S227–S237.
- Sokal, R.R., Rohlf, F.J., 1995. *Biometry*, 3rd ed. WH Freeman, New York, USA (880 pp).
- Specht, H.M., Reich, H.T., Iannarilli, F., Edwards, M.R., Stapelton, S.P., Weegman, M.D., Johnson, M.K., Yohannes, B.J., Arnold, T.W., 2017. Occupancy surveys with conditional replicates: an alternative sampling design for rare species. *Methods Ecol. Evol.* 8, 1725–1734.
- Su, Y.S., Yajima, M., 2015. R2jags: Using R to Run 'JAGS'. R Package Version 0.5-7. <https://CRAN.R-project.org/package=R2jags>.
- Sullivan, B.L., et al., 2014. The eBird enterprise: an integrated approach to development and application of citizen science. *Biol. Conserv.* 169, 31–40.
- Tenan, S., Imma, A., Bragalanti, N., Pedrini, P., De Barba, M., Randi, E., Groff, C.,

- Genovart, M., 2016. Evaluating mortality rates with a novel integrated framework for nonmonogamous species. *Conserv. Biol.* 30, 1307–1319.
- Theobald, E.J., et al., 2015. Global change and local solutions: tapping the unrealized potential of citizen science for biodiversity research. *Biol. Conserv.* 181, 236–244.
- Thompson, W.L., 2004. *Sampling rare or elusive species*. Island Press, Washington, DC, USA (429 pp).
- Weintraub, K., George, T.L., Dinsmore, S.J., 2016. Nest survival of tricolored blackbirds in California's Central Valley. *Condor* 118, 850–861.
- Williams, E.J., Boyle, W.A., 2018. Patterns and correlates of within-season breeding dispersal: a common strategy in a declining grassland songbird. *Auk* 135, 1–14.
- Woinarski, J.C.Z., Whitehead, P.J., Bowman, D.M.J.S., Russell-Smith, J., 1992. Conservation of mobile species in a variable environment: the problem of reserve design in the Northern Territory, Australia. *Glob. Ecol. Biogeogr.* 2 (1), 10.
- Wood, S.N., 2011. Fast stable restricted maximum likelihood and marginal likelihood estimation of semiparametric generalized linear models. *J. R. Stat. Soc. Ser. B* 73, 3–36.
- Yoccoz, N.G., Nichols, J.D., Boulinier, T., 2001. Monitoring of biological diversity in space and time. *Trends Ecol. Evol.* 16, 446–453.
- Zipkin, E.F., Saunders, S.P., 2018. Synthesizing multiple data types for biological conservation using integrated population models. *Biol. Conserv.* 217, 240–250.